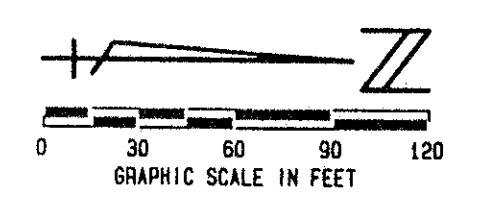


STATE OF FLORIDA
COUNTY OF PALM BEACH

THIS PLAT WAS FILED FOR
RECORD _____ DAY OF _____
AD, 1995 AND DULY RECORDED
IN PLAT BOOK _____ ON PAGES
_____ AND _____

DOROTHY H. WILKEN, CLERK
BY: _____, D.C.



ADDISON RESERVE PARCEL THREE

PART OF GLENEAGLES/POLO CLUB WEST P. U. D.
BEING A REPLAT OF TRACT 3
ADDISON RESERVE PLAT ONE (P. B. 75, PGS. 143 - 149)
SITUATE IN SECTIONS 27 & 28, TOWNSHIP 46 SOUTH
RANGE 42 EAST
PALM BEACH COUNTY, FLORIDA
MAY, 1995
SHEET 2 OF 2

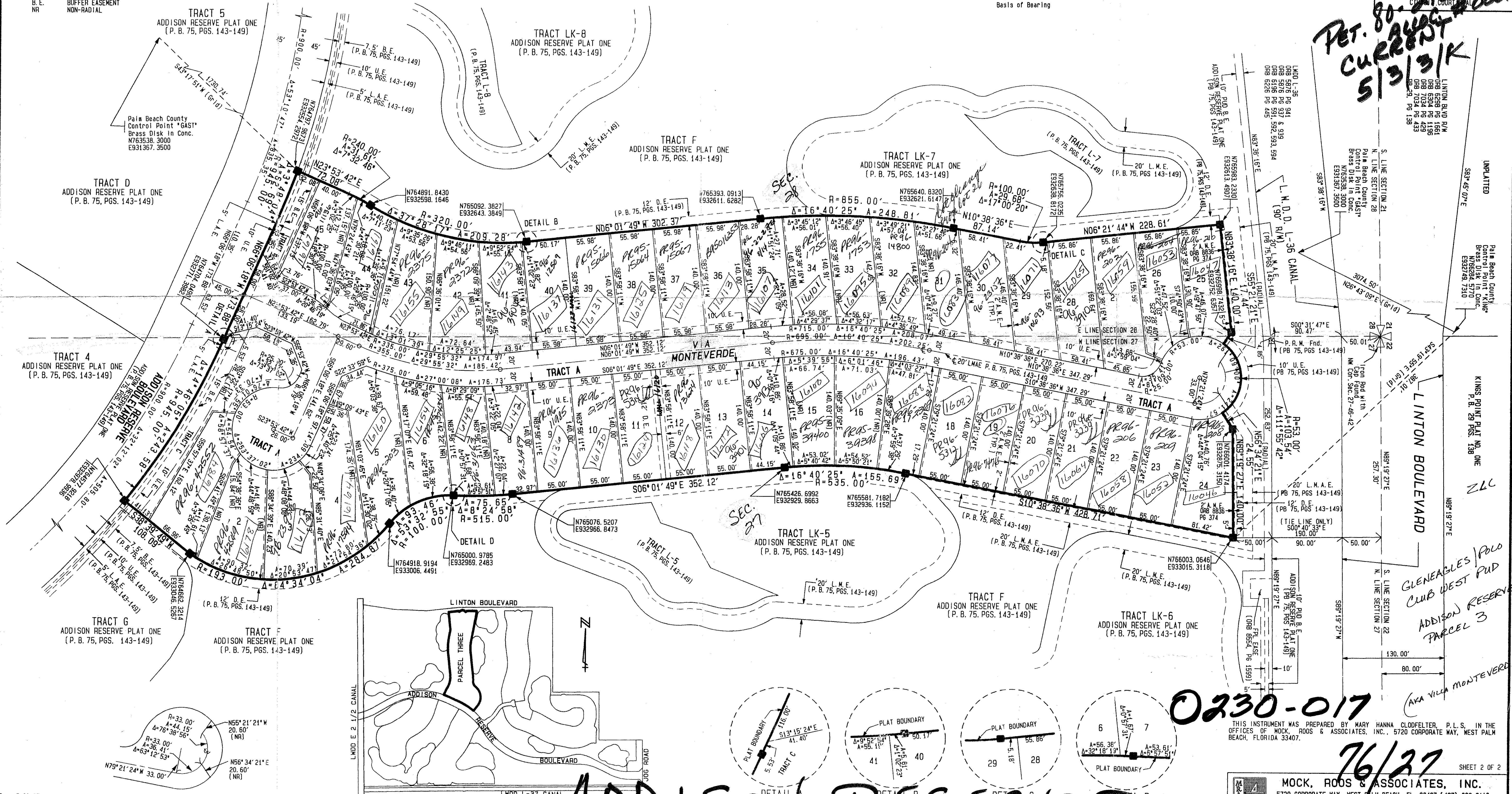
- LEGEND:**
- L. W. D. D. LAKE WORTH DRAINAGE DISTRICT
 - FPL FLORIDA POWER & LIGHT
 - ORB OFFICIAL RECORD BOOK
 - PBCO PALM BEACH COUNTY
 - PRM PERMANENT REFERENCE MONUMENT
 - P. B. PLAT BOOK
 - Pp. PAGES
 - PB PERMANENT REFERENCE MONUMENT
 - U. E. UTILITY EASEMENT
 - O. E. ORAINAGE EASEMENT
 - A. M. E. ACCESS AND MAINTENANCE EASEMENT
 - TMP TOWNSHIP
 - RGE RANGE
 - (NR) NON RADIAL
 - PERMANENT CONTROL POINT
 - PERMANENT REFERENCE MONUMENT
 - SET PLS* 4763
 - PERMANENT REFERENCE MONUMENT FOUND
 - L. M. A. E. LAKE MAINTENANCE ACCESS EASEMENT
 - L. M. E. LAKE MAINTENANCE EASEMENT
 - R/W RIGHT OF WAY
 - EASEMENT
 - PUD PLANNED UNIT DEVELOPMENT
 - B. E. BUFFER EASEMENT
 - NR NON-RADIAL

NOTE: AN ACCESS AND MAINTENANCE EASEMENT, 2 FEET IN WIDTH, EXISTS, ADJACENT TO AND CONTIGUOUS WITH THE ZERO LOT LINE OF THE ADJOINING LOT. THIS EASEMENT IS FOR ACCESS AND MAINTENANCE AND IS IN FAVOR OF THE ADJOINING LOT, ITS SUCCESSORS AND ASSIGNS, WITHOUT RECOURSE TO PALM BEACH COUNTY.

DETAIL FOR ACCESS AND MAINTENANCE EASEMENT (NOT TO SCALE)

COORDINATE NOTE:
ALL DISTANCES ARE GROUND
SCALE FACTOR - 1.0000242
COORDINATES SHOWN ARE GRID
DATUM - NAD 83 1990 ADJUSTMENT
ZONE - FLORIDA EAST
LINEAR UNIT - US SURVEY FEET
COORDINATE SYSTEM 1983 STATE PLANE
TRANSVERSE MERCATOR PROJECTION
GROUND DISTANCE X SCALE FACTOR = GRID DISTANCE

North line of the NW 1/4
Section 27-45-42
Basis of Bearing



*PET. 80-215H
CURRENT 5/3/91K*

ORIGINATOR: DOROTHY H. WILKEN, CLERK
DATE: MAY 1995
DRAWN BY: _____
CHECKED BY: _____

SUBDIVISION # ADDISON RESERVE PARCEL THREE
BOOK 76 FLOOD MAP # 215A
QUAD 45-37 ZONING RTS
OR 80-215 ZIP CODE 33446
PUD NAME GLENEAGLES/POLO CLUB WEST

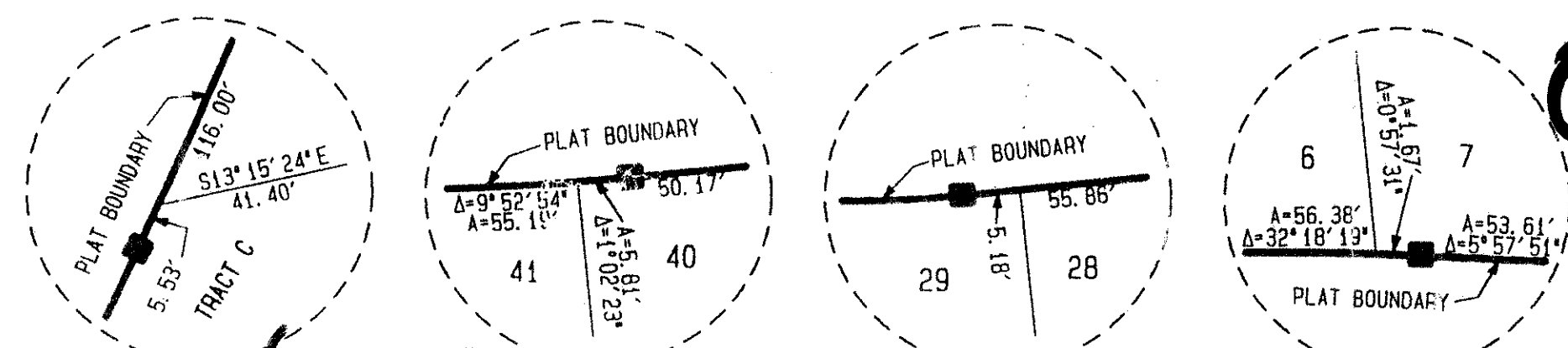
TAZ-477

Rev. 7-06-95
Rev. 5-19-95
CADD FILE
TWKCRP15

DETAIL E
@ 20' L.M.A.E.

SHEET LOCATION MAP
NOT TO SCALE

ADDISON RESERVE PAR. 3



0230-017

THIS INSTRUMENT WAS PREPARED BY MARY HANNA CLOPFELTER, P.L.S., IN THE OFFICES OF MOCK, ROOS & ASSOCIATES, INC., 5720 CORPORATE WAY, WEST PALM BEACH, FLORIDA 33407.

MOCK, ROOS & ASSOCIATES, INC.
5720 CORPORATE WAY, WEST PALM BEACH, FL 33407 (407) 683-3113

DATE: MAY 1995
ADDISON RESERVE PARCEL THREE
PART OF GLENEAGLES/POLO CLUB WEST, P. U. D.
SECTIONS 27 & 28, TOWNSHIP 46 SOUTH, RANGE 42 EAST